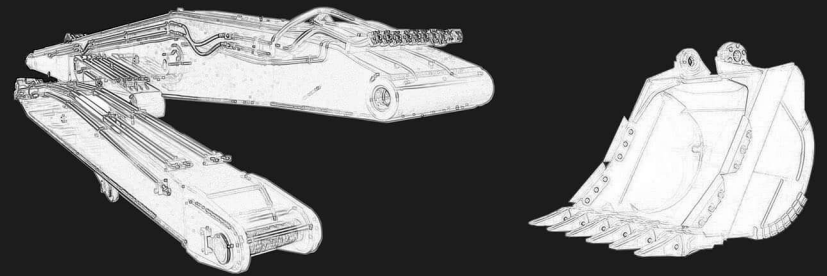




HITE MACHINERY CO., LTD



We Made Goods To Last

Guangzhou Hite Machinery co.,Ltd

Email: info@hitemachinery.com

WhatsApp: +86 18922117251

Web: www.hitemachinery.com

Web: www.hitemachinery.com

**Restrict Quality Control In Compliance With
International Standards. ISO9001, SGS
Certificated Supplier.**

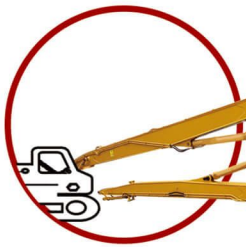


NITE Catalog

**10 years
focus on
excavator parts
manufacturing**



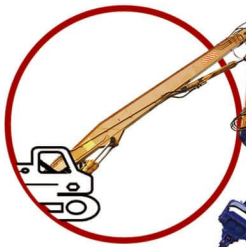
Excavator Long Reach
Boom and Arm 01



Excavator Demolition
Boom and Arm 03



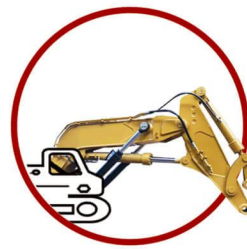
Excavator
Telescopic Arm 05



Piling Boom and Arm 07



Excavator Rock Boom 09



Short Boom 11

EXCAVATOR BUCKET



13

Catalog

EXCAVATOR GRAB ATTACHMENT



19

OTHER EXCAVATOR ATTACHMENTS



22



DIGGING COAL



ROCK DIGGING



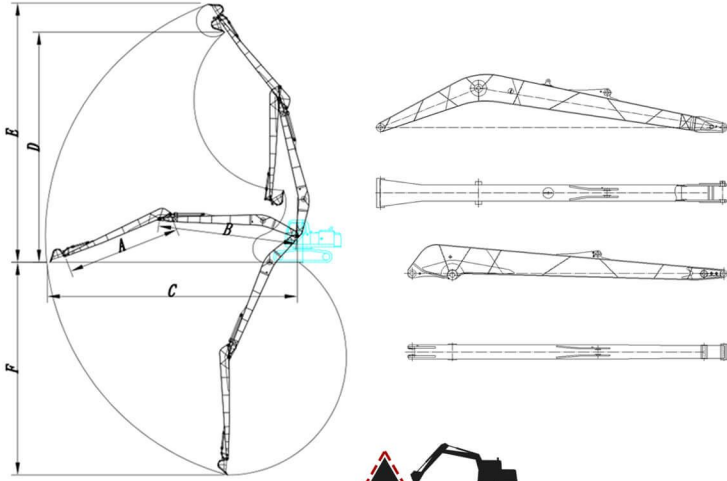
EXCAVATOR PILING



Excavator Two-segment Long Reach Boom and Arm

Material: Q355, Q550, Q690, HG785 and other material are available according to customer requirement. products:

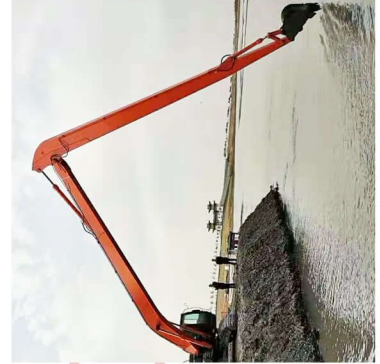
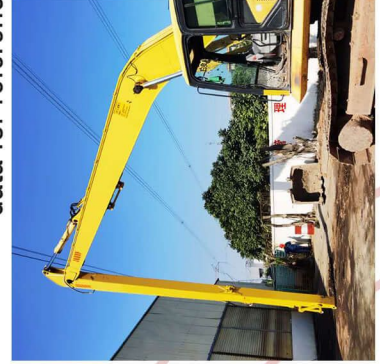
HITE Long Reach Boom is manufactured with the best fit steels series that came from Chinese Top 3 Steel Maker to ensure the highest quality consistent with the lowest weight possible. Applications include light or heavy duty work on waterway maintenance to heavy-duty production work in sand and gravel extraction.



Long Reach

Machine Tonnage	Extension boom	Extended arm	Height while transporting	Digging radius	Max. unloading height	Max. Digging height	Max. Digging depth	Bucket capacity	Cylinder (T)	Weight while
12T	7100mm	5900mm	2900mm	11200mm	73500mm	9350mm	9000mm	0.3	12	3000
20T	8220mm	7160mm	2980mm	14500mm	10390mm	12510mm	11340mm	0.4	12	4000
35T	8220mm	7160mm	3050mm	14500mm	10490mm	12610mm	11370mm	0.4	12	4200
30T	10000mm	8000mm	3210mm	17300mm	11720mm	13920mm	13010mm	0.4	12	5200
35T	11000mm	9000mm	3210mm	19200mm	12920mm	15120mm	15000mm	0.5	12	6000
40T	12000mm	10000mm	3400mm	21100mm	14240mm	16980mm	16500mm	0.6	20	6500
45T	13000mm	11000mm	3400mm	22900mm	15230mm	17800mm	18000mm	0.6	20	7000

data for reference only

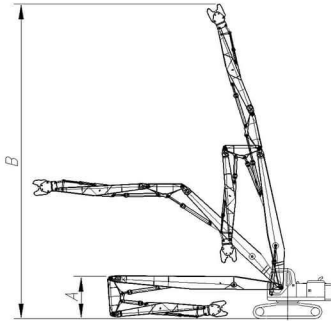




Excavator Demolition Boom and Arm

Material: Q355, Q550, Q690, HG785 and other material are available according to customer requirement. products:

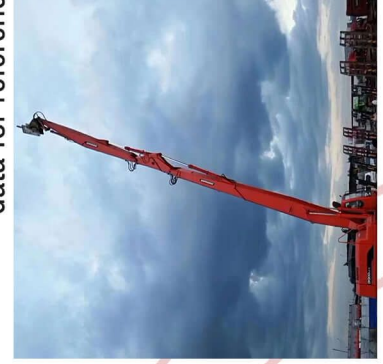
HITE Demolition Packages are specially built for every type of deconstruction. Whether you're tearing down a building, picking apart ground level debris, or severing rebar, our hardworking machines go to great lengths to help you tackle the toughest demolition applications, safely and effectively.



High Demolition

Machine Tonnage	Total length for 3 segments (mm)	Transportation height (mm)	Lifting height (mm)	hydraulic shear weight limit (kg)	Cylinder (T)	Weight while working (T)	Counter weight (T)
25T	16000	3160	14900	2000	20	5000	4
30T	18000	3300	17000	2001	20	6500	4.5
35T	20000	3300	19000	2002	20	7000	4.5
40T	22000	3400	21050	2003	22	7800	5
45T	24000	3400	23100	2004	22	8500	5

data for reference only

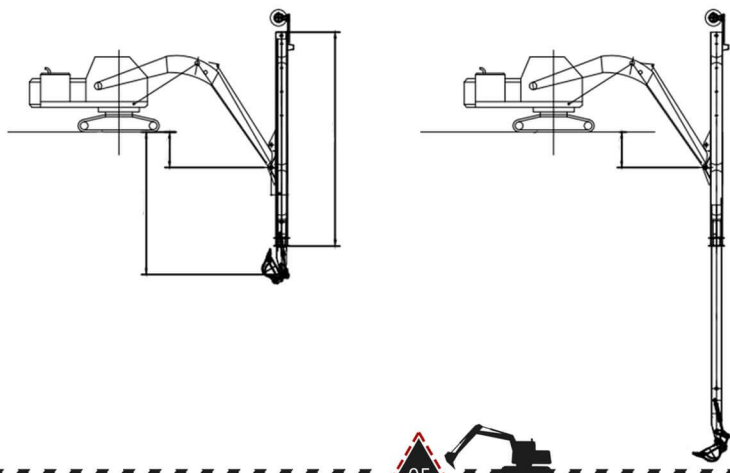




Excavator Telescopic boom

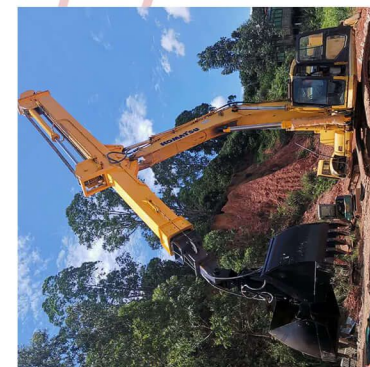
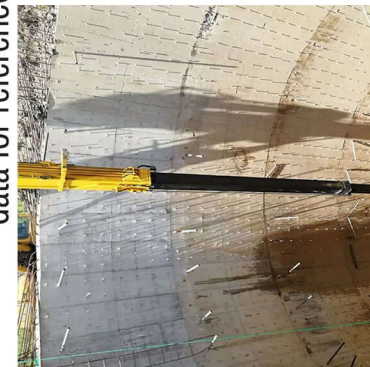
Material: Q355, Q550, Q690, HG785 and other material are available according to customer requirement products:

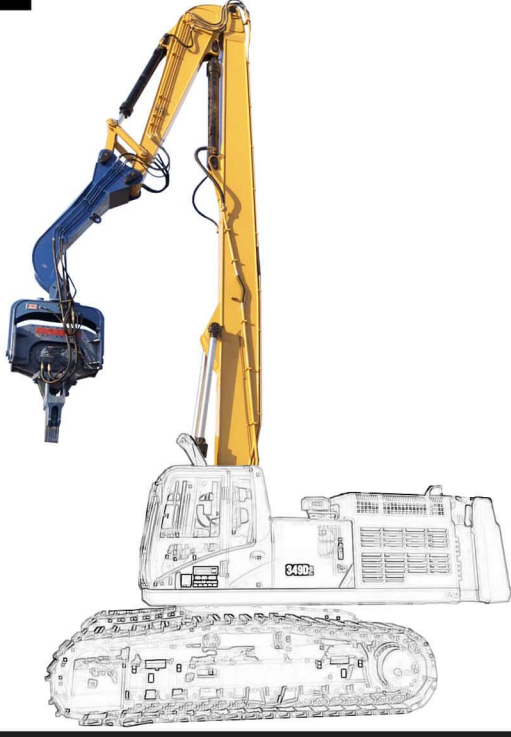
HITE Excavator Telescopic Arm is the working device installed on the excavator, usually work with clamshell grab or other grab buckets. It consists of the fixed body and the mobile body that can extend and retract the mobile body through the action of the telescopic cylinders, to achieve a larger excavation radius and a reasonable loading height.



Machine Tonnage	Specification													
	12T	20T	22T	30T	35T	40T	45T	Minimum length of forearm retraction (mm)	3500	4300	4600	5400	6000	6500
							Maximum length of outstretched arm (mm)	5500	6800	7200	9000	9600	10000	10500
							Working weight of the Boom (kg)	1000	1500	1700	2300	2600	3000	3200
							Bucket Capacity (cbm)	0.4	0.5	0.5	0.5	0.6	0.6	0.6
							Maximum digging depth (mm)	8500	10000	10500	12000	12500	13000	14000

data for reference only

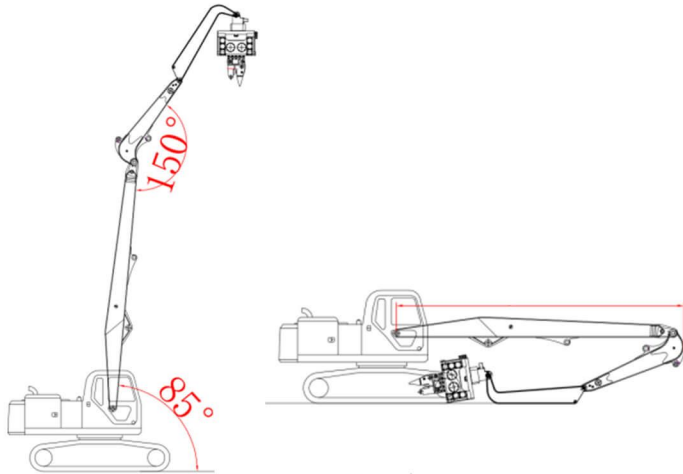




Excavator Piling Boom

Material: Q355, Q550, Q690, HG785 and other material are available according to customer requirement.

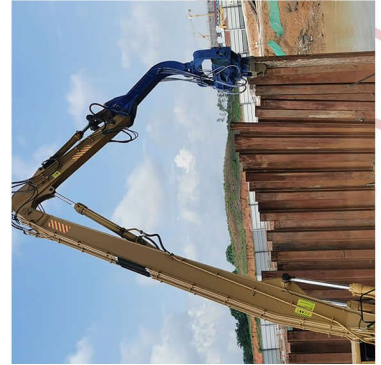
HITE Excavator Piling Boom and Arm is designed specifically for piling construction based on FEA analysis and 2D/3D simulation. It has better performance in piling and pulling steel sheet pile, cement pile, steel rail column, H-pile and drainage belt. Etc.

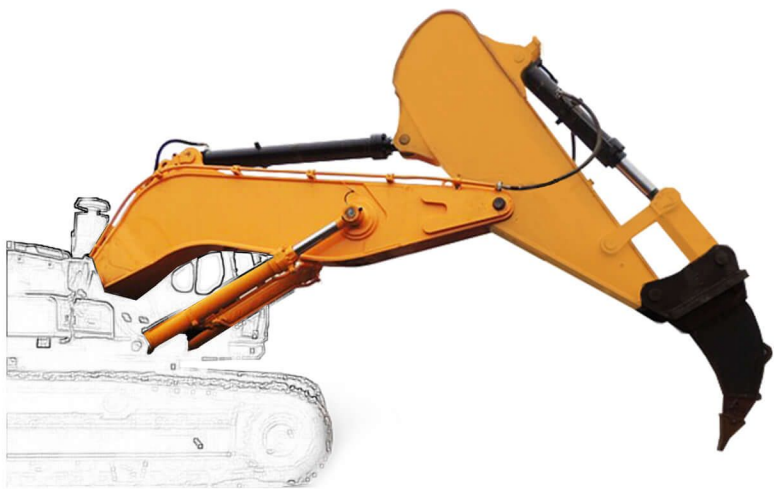


Piling Boom

Machine Tonnage	Total Length of Boom and Arm (mm)	Max. Piling Height (mm)	Weight (kg)	Total Height
Above 20T	11000	9000	4800	3200
Above 30T	16000	14000	5900	3380

data for reference only



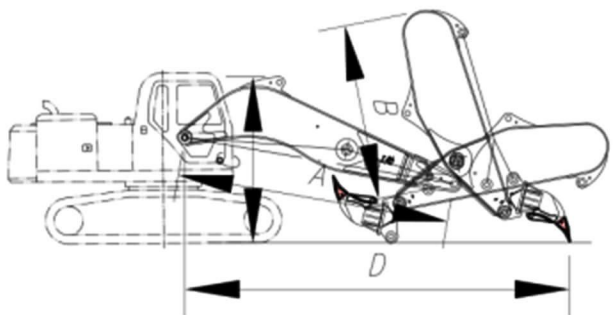


Rock boom and arm

Material: Q355, Q550, Q690, HG785 and other material are available according to customer requirement.

products:

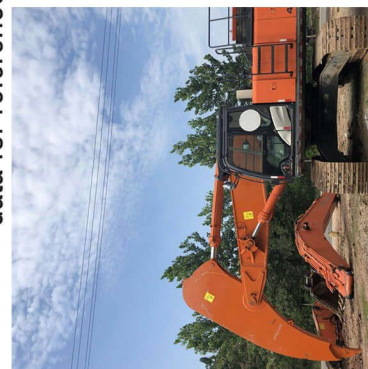
HITE Rock Boom is a highly efficient tool. The unique ripper arm design enlarges the machines' excavating strength. Mainly used for hard ground, hard soil, gravel, sub-hard stone, weathered stone. Etc.

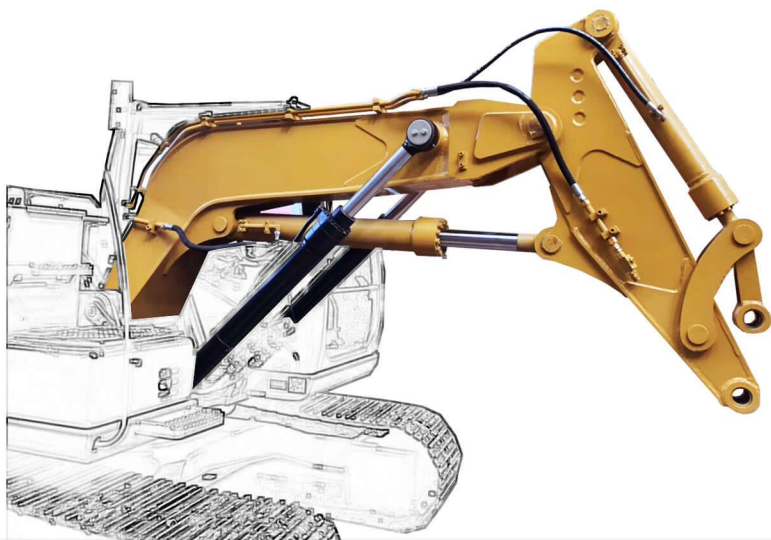


Rock Boom&Arm

Machine Tonnage	Length of Boom (mm)	Length of Arm (mm)	Total Length (mm)	Weight (T)	Height (mm)
40T	5600	3300	8600	16	3420
45T	5850	3400	8800	18	3420
50T	6100	3500	9100	20	3440
60T	6300	3750	9500	22	3620
70T	6500	3950	9800	24	3850

data for reference only



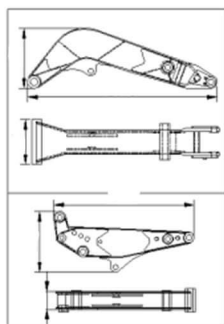
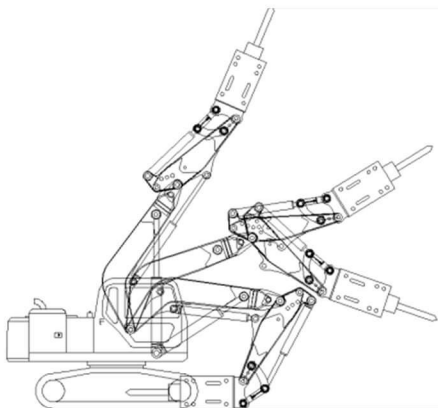


Shortening boom and arm

Material: Q355, Q550, Q690, HG785 and other material are available according to customer requirement.

products:

HITE Shortening Boom&arm is designed to work on limited working space. Larger cylinder with shorter boom and arm enable the machine to work with higher strength and flexibility under narrow or limited space such as tunnel construction, subway construction. Etc.



Standard Boom and Arm

Machine Tonnage	Total Length of Boom and Arm (mm)	Bucket Capacity (m ³)	Weight (kg)	Max. Digging Height (mm)	Max. Digging Depth (mm)	Overall Height (mm)
6T	5935	0.2	5300	5850	3800	2550
12T	7720	0.5	12000	8610	5520	2175
20T	9425	0.8	19900	10000	6620	3040
30T	11100	1.4	31200	10210	7380	3280
35T	11140	1.6	33000	10210	7380	3280
40T	11940	2.0	42100	10925	7790	3400
45T	12040	2.1	45125	10925	7790	3400





Excavator Heavy Duty Bucket/Standard bucket

HITE Heavy Duty Bucket is our most popular bucket series. Main body adopted Chinese Q355b, also named: USA572, CANADA350WT, JAPANSM490. etc. Material like Hardox500, NM360 are available according to your needs.

Product Specification:

Material : Alloy,High-strength alloy

Code : Q355b,NM360,HARDOX-500

Hardness: 163-187,360, 470-500 :

Extension : 21%,16%,8%

Bend Intensity (N/mm²) : 355,1020,1300

Specification For Bucket Size

Capacity (m ³)	0.8	1	1.2	1.5	1.8	2	2.5	3	4	5	7
Length (")	42.5	46.5	46.5	51.2	51.2	53.1	59.1	66	67.3	73.6	82.7
Width (")	39.4	45.3	49.5	51.9	59.8	59.8	61	62.2	66.9	70.9	89.4
High (")	27.6	29.9	31.5	33.9	35.8	38.6	40.9	44.5	53.1	57.9	57.9
Teeth (Optional)	PC200	PC200	PC200	PC300	PC400	PC400	PC400	PC650	PC650	PC650	PC1000
Lip (")	1.6	1.6	1.6	1.6	1.6	1.6	1.6	1.6	1.6	1.6	1.6



Excavator Tilt Bucket

Used for ditch cleaning and sloping grading. Double cylinder design and single cylinder design are both available.

Product Specification:

Material : Alloy,High-strength alloy

Hardness: 163-187,360, 470-500 :

Extension : 21%,16%,8%

Bend Intensity (N/mm²) : 355,1020,1300

Drag and extension intensity (N/mm²) :

470-660,1200,1500

HITE Tilt Bucket

Material	Code	Related Chemical Composition					Hardness (HB)	Extension (%)	Drag and extension intensity (N/mm ²)	Bend Intensity (N/mm ²)
		C	Si	Mn	P	S				
Alloy Steel	Q355	0.18	0.55	1.4	0.03	0.03	163-187	21	470-660	355
Chinese High-Strength alloy	NM360	0.2	0.3	1.3	0.02	0.006	360	16	1200	1020
High-Strength alloy	HARDOX-500	0.2	0.7	1.7	0.2	0.01	470-500	8	1550	1300



Drainage Bucket

Drainage bucket is mainly design for drainage project, with less width and tough material. It's easier to get the job done with professional tool. Shape of the bucket is fully customizable. Please share your thought with us.

Product Specification:

Material : Alloy,High-strength alloy

Code : Q355b

Application : Drainage Cleaning

Package : Standard Package



Thumb fight



Excavator Skeleton Bucket

HITE skeleton bucket is great for sifting out rocks in soil, effectively mining and sorting rock, and removing other debris without the soil.

Product Specification:

Material : Alloy,High-strength alloy

Code : Q355b,NM360,HARDOX-500

Hardness: 163-187,360, 470-500 :

Extension : 21%,16%,8%

Bend Intensity (N/mm²) : 355,1020,1300

Application : Removal of rock and debris without soil

Specification For Bucket Size

Capacity (m ³)	0.8	1	1.2	1.5	1.8	2	2.5	3	4	5	7
Length (")	42.5	46.5	46.5	51.2	51.2	53.1	59.1	66	67.3	73.6	82.7
Width (")	39.4	45.3	49.5	51.9	59.8	59.8	61	62.2	66.9	70.9	89.4
High (")	27.6	29.9	31.5	33.9	35.8	38.6	40.9	44.5	53.1	57.9	57.9
Teeth (Optional)	PC200	PC200	PC200	PC300	PC400	PC400	PC400	PC650	PC650	PC650	PC1000
Lip (")	1.6	1.6	1.6	1.6	1.6	1.6	1.6	1.6	1.6	1.6	1.6



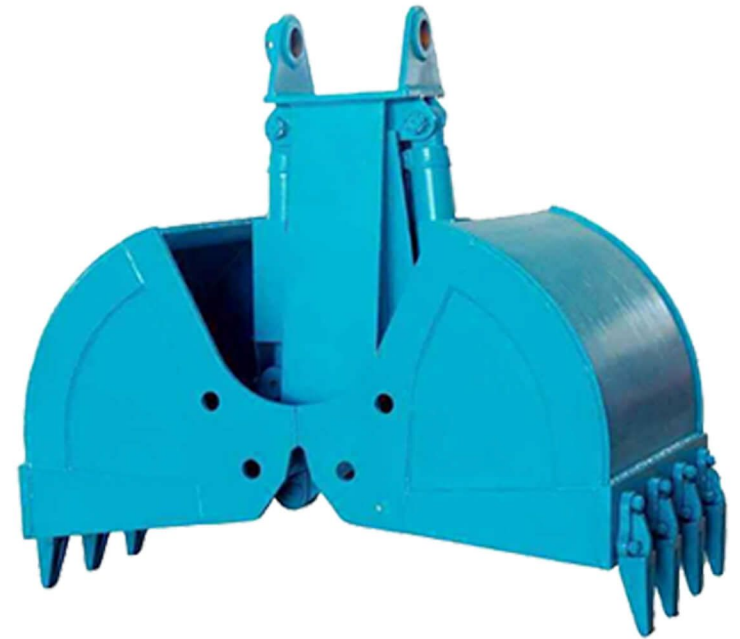
Excavator Rake

HITE Rake is a powerful tool that clear away the unwanted roots, soil, sand, gravel, rock and light debris after demolition. The HT Rake is available in various size, widths and tine configurations to suit specific applications. OEM available.

Product Specification:

Product Name : Land Clearing Rake, Excavator Rake

Material : Q355b



Clamshell bucket

Clamshell bucket can be divided into two types, rotating and non-rotating. We can also customize the product according to customers' requirements.

Product Specification:

Material : Alloy,High-strength alloy

Code : Q355b,NM360,HARDOX-500

Hardness: 163-187,360, 470-500 :

Bend Intensity (N/mm²) : 355,1020,1300

HITE Rake

Material	Code	Related Chemical Composition					Hardness (HB)	Extension (%)	Drag and extension intensity (N/mm ²)	Bend Intensity (N/mm ²)
		C	Si	Mn	P	S				
Alloy Steel	Q355	0.18	0.55	1.4	0.03	0.03	163-187	21	470-660	355
Chinese High-Strength alloy	NM360	0.2	0.3	1.3	0.02	0.006	360	16	1200	1020
High-Strength alloy	HARDOX-500	0.2	0.7	1.7	0.2	0.01	470-500	8	1550	1300

HITE Clamshell Bucket

Material	Code	Related Chemical Composition					Hardness (HB)	Extension (%)	Drag and extension intensity (N/mm ²)	Bend Intensity (N/mm ²)
		C	Si	Mn	P	S				
Alloy Steel	Q355	0.18	0.55	1.4	0.03	0.03	163-187	21	470-660	355
Chinese High-Strength alloy	NM360	0.2	0.3	1.3	0.02	0.006	360	16	1200	1020
High-Strength alloy	HARDOX-500	0.2	0.7	1.7	0.2	0.01	470-500	8	1550	1300



Excavator Grapple

HITE Grapple also called plum grapples, grasping forceps, hydraulic claws, grasping steel device. Both rotating and non-rotating types are available.

Product Specification:

Material : Q355b and Q690D

Application : Grabing wood, waste, tubes. etc.

Power : Hydraulic

Motor : Symmetrical double support

Grapple

Machine Tonnage	Description	Max. Opening ranging(in)	Weight(lbs)	Material
6-10T	Rotating/non-rotating	57.1	1430/1562	Q690+NM360
11-16T	Rotating/non-rotating	66.9	1760/1914	Q690+NM360
17-20T	Rotating/non-rotating	74.8	2134/2310	Q690+NM360
21-24T	Rotating/non-rotating	80.7	2354/2530	Q690+NM360
25-30T	Rotating/non-rotating	86.6	2640/2860	Q690+NM360
31-35T	Rotating/non-rotating	90.6	3080/3344	Q690+NM360
36-40T	Rotating/non-rotating	94.5	3630/3938	Q690+NM360
41-45T	Rotating/non-rotating	98.4	4268/4620	Q690+NM360
65T	Rotating/non-rotating	98.4	8140/9240	Q690+NM360



Excavator Orange Peel Grab

HITE Excavator Polyp grab could load and clear up stone, scrap steel, which is suitable to the excavator used on the working site such as building site, stockyard, steel mill. It is controlled by hydraulic system of excavator

Product Specification:

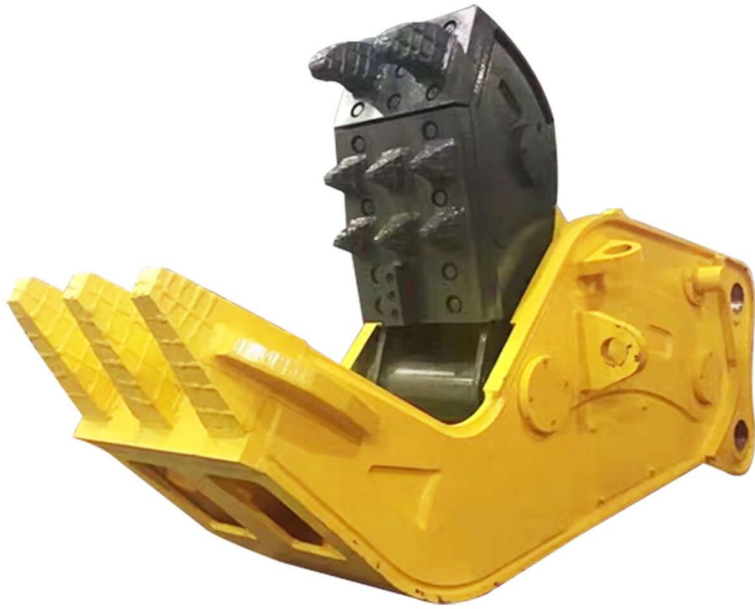
Material : Q355b

Application : Grabbing steel scrap, stone, construction material

Packing : Standard

Excavator Hydraulic Polyp Grab

Machine Tonnage	Description	Number of Tines	Weight(Kg)	Material
3-5T	Rotating/non-rotating	4	380/420	Q690+NM360
6-10T	Rotating/non-rotating	4	570/620	Q690+NM360
11-16T	Rotating/non-rotating	5	820/880	Q690+NM360
17-20T	Rotating/non-rotating	5	1080/1180	Q690+NM360
21-24T	Rotating/non-rotating	5	1200/1300	Q690+NM360
25-30T	Rotating/non-rotating	6	1320/1450	Q690+NM360
31-35T	Rotating/non-rotating	6	1450/1600	Q690+NM360
36-40T	Rotating/non-rotating	6	1680/1850	Q690+NM360
41-45T	Rotating/non-rotating	6	1950/2150	Q690+NM360



Excavator Hydraulic Stone Pulverizer

HITE Hydraulic Stone Pulverizer equipment offers a variety of sizes for precise fitting onto machines ranging approximately 30,000 to 240,000 pounds.

Product Specification:

Excavator Weights : 20-40 ton

Certification : ISO9001

Operation pressure : 300 kg/cm²

Jaw Opening : 0-980 mm

Material

Material	Code	Related Chemical Composition					Hardness (HB)	Extension (%)	Drag and extension intensity (N/mm ²)	Bend Intensity (N/mm ²)
		C	Si	Mn	P	S				
Alloy Steel	Q355	0.18	0.55	1.4	0.03	0.03	163-187	21	470-660	355
Chinese High-Strength alloy	NM360	0.2	0.3	1.3	0.02	0.006	360	16	1200	1020
High-Strength alloy	HARDOX-500	0.2	0.7	1.7	0.2	0.01	470-500	8	1550	1300



Excavator Hydraulic Stone Pulverizer

HITE Hydraulic Stone Pulverizer equipment offers a variety of sizes for precise fitting onto machines ranging approximately 30,000 to 240,000 pounds.

Product Specification:

Excavator Weights : 20-40 ton

Certification : ISO9001

Operation pressure : 300 kg/cm²

Jaw Opening : 0-980 mm

Material

Material	Code	Related Chemical Composition					Hardness (HB)	Extension (%)	Drag and extension intensity (N/mm ²)	Bend Intensity (N/mm ²)
		C	Si	Mn	P	S				
Alloy Steel	Q355	0.18	0.55	1.4	0.03	0.03	163-187	21	470-660	355
Chinese High-Strength alloy	NM360	0.2	0.3	1.3	0.02	0.006	360	16	1200	1020
High-Strength alloy	HARDOX-500	0.2	0.7	1.7	0.2	0.01	470-500	8	1550	1300



Excavator Hydraulic Quick Hitch

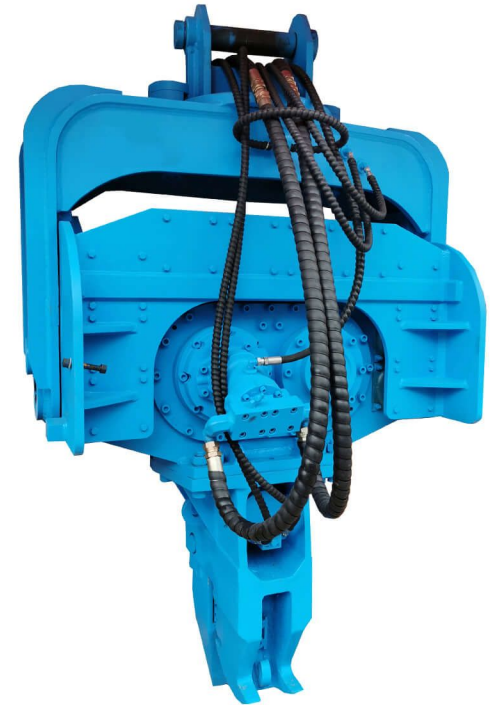
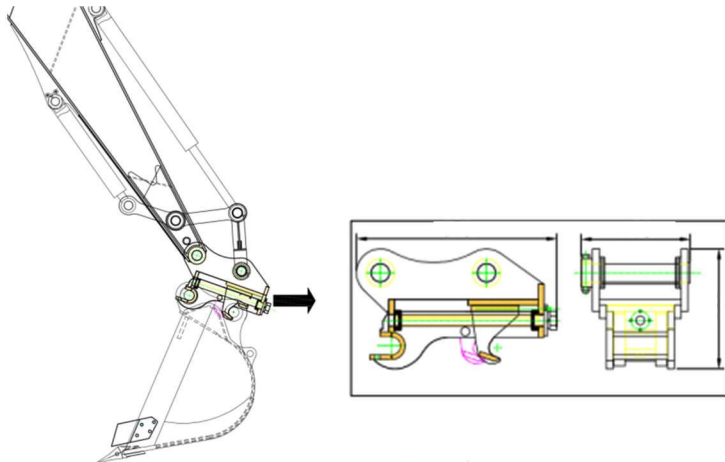
HITE Excavator Quick Hitch can be used on the excavators or loader to change every accessory, such as bucket, breaker, shear, etc., easily and quickly, which has widened the use range of the excavators and saved a lot of time.

Product Specification:

Excavator : Any brand

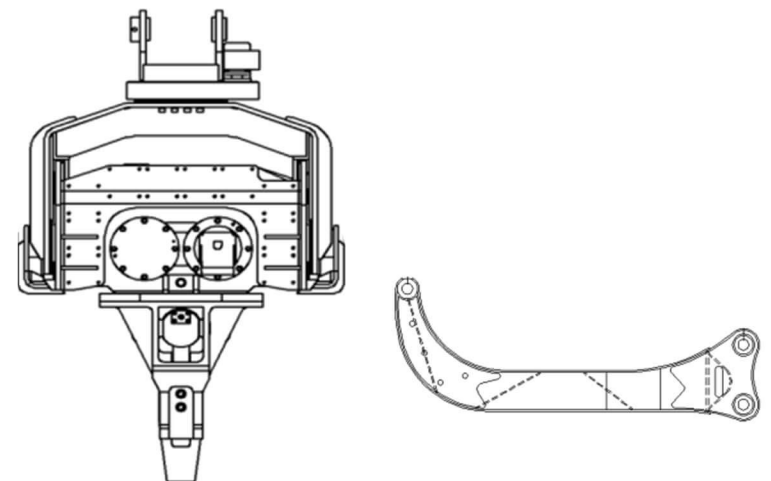
Pin Diameter : 45-50

Type : Hydraulic; Manual



Excavator Pile Hammer

With the advanced technology, HITE vibratory hammer has advantages of low noise, high efficiency, non-pollution and non-damage to piles, etc. Apart from driving and pulling elements such as sheet piles and pipes, HITE vibratory hammers are also used for soil densifying or vertical drainage, especially suitable for municipal, bridges, cofferdam, building foundation, etc.



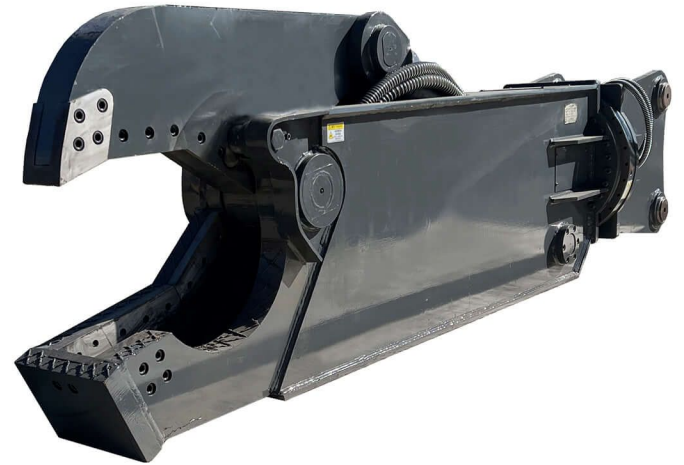


Excavator Hydraulic Metal Cutting Shear

HITE Excavator Hydraulic Metal Cutting Shear is the perfect attachment for primary demolition, especially on high-reach excavators where there are reinforced concrete beams or columns. Our all-purpose dual-cylinder demolition shears can be used on any site, with advanced demolition Capabilities such as 360° rotation allowing for fast accurate and efficient positioning of the jaw.

Product Parameter Table

No	Item/Model	Unit	HT04	HT06	HT08	HT10
1	Suitable Excavator	T	6-12	14-16	17-25	26-35
2	Weight	kg	650	910	1900	2200
3	Jaw Opening	MM	620	890	910	980
4	Blade Length	MM	145	160	190	190
5	Crushing Force	Ton	40	58	70	55-80
6	Cutting Force	Ton	90	115	130	154
7	Oil Flow	Lpm	110	160	220	240
8	Working Pressure	Mpa	25	30	30	30

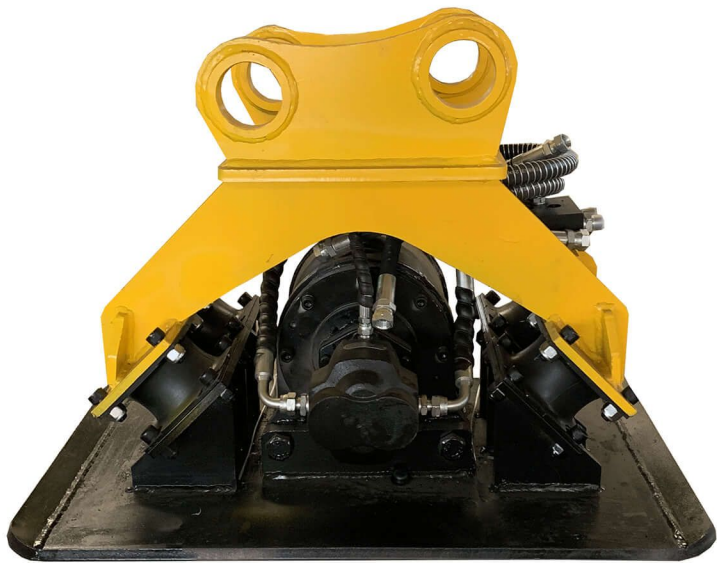


Excavator Hydraulic Shear

1. Applied to handle H-beam, I-beam steel, automobile beam, workshop girder, especially suitable for heavy duty steel cutting, which can reach maximum efficiency.
2. Up to 1500T cutting force, more powerful shear work.
3. Made of Hardox high strength steel, long durability.
4. Speed up valve installed, increasing productivity.
5. Can be applied to waste and used boat disassemble and scrap recycling.

Product Parameters

Item/Model	Unit	HTJ280	HTJ350	HTJ380	HTJ450	HTJ480
Arm Installation	Ton	18-27	28-38	30-40	45-50	42-50
Boom Installation	Ton	14-18	20-28	20-28	28-39	28-39
Weight	Kg	2100	3000	3500	4500	4600
Maximum Opening with Jaw	MM	485	595	600	700	740
Overall Length	MM	2700	3200	3280	3700	3800
Operating Pressure	Kg/cm ³	250-300	300-320	320-350	320-350	320-350
Operating Flux	L/min	180-220	200-250	200-250	250-300	250-300



Excavator Vibrating Tamping Rammer

Excavator vibrating tamping rammer is mainly used with excavator, installed in the original bucket position on the front-end of boom, using the excavator's hydraulic drive and control. Simple structure, convenient in operation and maintenance. Applicable to a variety of terrain and a variety of operation ways. It can complete plane compaction, inclined plane compaction, the steps to consolidate, cement pits of groove and other complex foundation ramming processing.

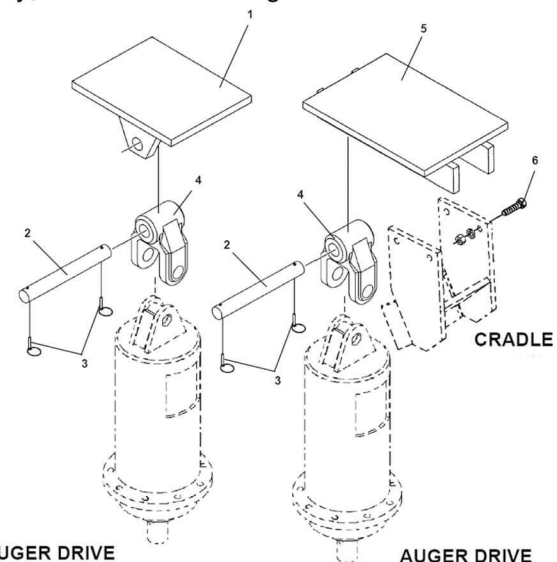
Product Parameter Table

No	Item/Model	Unit	HT400	HT600	HT800	HT1000
1	Height	MM	750	930	1000	1100
2	Width	MM	550	700	900	900
3	Power	Ton	4	6.5	15	15
4	Vibration Frequency	RPM/MIN	2000	2000	2200	2200
5	Impact measurement	MM	900*550	1160*700	1350*900	1350*900
6	Weight	Kg	550-600	750-850	900-1000	1000-1100
7	Carrier	Ton	4-10	12-16	18-24	25-40



Excavator Hydraulic Earth Drill

Hydraulic earth drill is kind of machinery specially to drill holes for pole, wood pile, bridge pier and tree planting. It is widely used in Electricity Industry, Telecommunication Industry, Public Infrastructure Projects, High Speed Rail, Express Way, Highway, Construction, Oil Exploration Industry, and Tree Planting etc.





Excavator Breaker Hammer

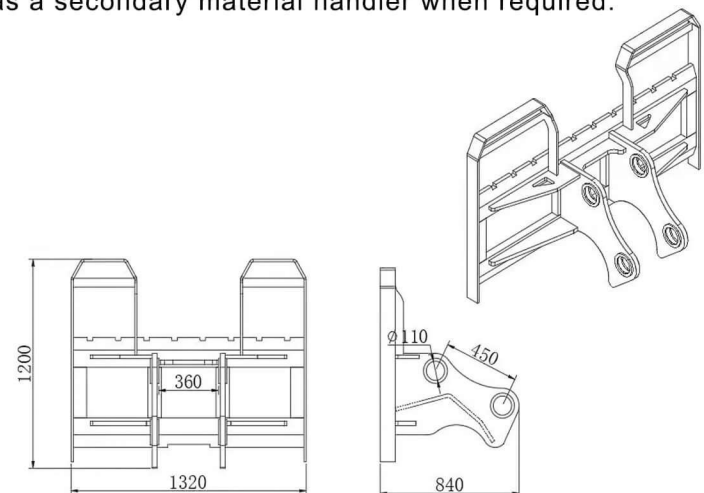
Excavator Hydraulic Hammer is abbreviated as "Breaker". It is fit for various kinds of excavators. The power source of the hydraulic breaker is the pressure provided by the excavator, loader or pumping station. It can crush stones and rocks more effectively in engineering construction and improve work efficiency. The principle of selecting a hydraulic breaker is to select the most suitable hydraulic breaker according to the model of the excavator and the operating environment.

SPECIFICATION					
Items	Unit	HT40	HT45	HT53	HT68
Body Weight	kg	53	71	89	156
Total Weight	kg	70/72/102	95/95/129	158/158/155	263/343/361
Operating Pressure	kg/cm ²	90-120	90-120	90-120	110-140
Hydraulic Flow Range	l/min	15-25	20-30	25-50	40-70
Diameter of Hose	inch	½	½	½	½
Diameter of tool	mm	40	45	53	68
Impact of Frequency	bpm	800-1400	700-1200	600-1100	500-900
Suitable carrier	ton	1-1.5	1.2-4	2.5-4.5	4-7



Excavator Pallet Fork

Pallets are often delivered to and need moving around construction sites. Whilst you won't always have a telehandler on hand, an excavator is usually not too far away, so it makes sense to adapt it using the excavator pallet fork attachment so you can call upon the machine as a secondary material handler when required.





Excavator Flail Mower

The excavator flail mower is a mechanical tool for trimming large-scale barren vegetation. The output shaft of the hydraulic motor is equipped with a blade. The blade uses the hydraulic motor's turning rotation to cut, saving the work time of the weeding workers and reducing a lot of human resources.

Applicable Width	Number of Blades	Weight	Motor Flow	Applicable Models	Product Number
60cm	14 Groups	120kg	6L/min	2T	HTFM-02
80cm	18 Groups	150kg	10L/min	3-4T	HTFM-04
100cm	20 Groups	300kg	12L/min	5-6T	HTFM-06
120cm	24 Groups	330kg	12L/min	9T	HTFM-09
140cm	28 Groups	380kg	23L/min	12T	HTFM-12
160cm	32 Groups	450kg	46L/min	15T	HTFM-15
180cm	36 Groups	500kg	55L/min	20T	HTFM-20



Excavator Variable Mulchers

Whether you're dealing with overgrown ditches, low vegetation, or removing entire trees, Variable Mulchers attachments can provide ideal solutions to achieve perfect results. This product is suitable for excavators and skid steers, with a variable cover machine working width of up to 1.5m and has the ability to replace the entire drum. The unique feature of a churning rather than a single tooth

HTFM1000

Standard gear motor

Oil Pressure Range: 160 - 180 bar (2320.6 - 2610.7 psi)

Optimum Oil Pressure: 180 bar (2610.7 psi)

Oil flow range: 60 - 70 L/min (15.85 - 18.49 gpm)

Optimum Oil Flow: 70 L/min (18.49 gpm)

Suitable for excavators

5 tons (11023 lbs) to 10 tons (22046 lbs)

Compatible with skid steers

For machines where the above pressures and flows are available

Cut

Cutting drum width: 1000 mm (40 inches)

Treats trees up to 120 mm (5 inches) in diameter

Size

Height 529mm x Width 1229mm x Diameter 794mm
20.82 inches high x 48.38 inches wide x 31.26 inches diameter

Weight

400 kg (882 lb)

HTFM1500

Standard piston motor

Oil Pressure Range: 220 - 240 bar (3190.8 - 3480.9 psi/inch)

Optimum Oil Pressure: 240 bar (3480.9 psi)

Oil flow range: 85 - 95 L/min (22.4 - 25.0 gpm)

Optimum Oil Flow: 95 L/min (25.0 gpm)

Suitable for excavators

10 tons (22046 lbs) to 15 tons (33069 lbs)

Compatible with skid steers

For machines where the above pressures and flows are available

Cut

Cutting drum width: 1500 mm (60 inches)

Treats trees up to 250 mm (10 inches) in diameter

Size

Height 953mm x width 1820mm x diameter 994mm
37.52 inches high x 71.65 inches wide x 39.13 inches diameter

Weight

800 kg (1763.7 lbs)

**LONG
REACH
BOOM**



**HIGH-REACH
DEMOLITION**







